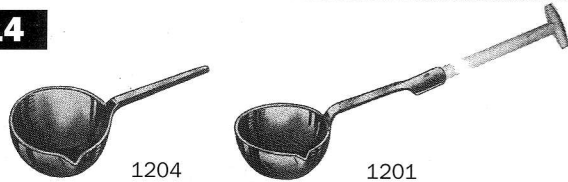


# ONE-PIECE FOUNDRY TOOLS (forged)

Please observe the INSTRUCTIONS FOR USE below!

**014**



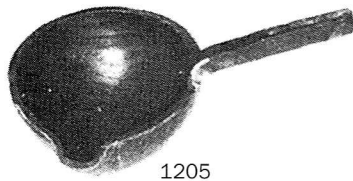
## Pouring spoons No. 1204, semispherical

with flat handle; with one or two lips  
wall thickness 2 to 3 mm; quality III = 1000°C

**Pouring spoons No. 1201** Spoon as described under No. 1204, with socket and beech T-handle, length 1000 mm

Outside dia. mm	60	80	100	120	140	160	180	200	220	240	260	280	300
<b>Design</b>	<b>Item No.</b>												
1204	014.106	014.108	014.110	014.112	014.114	014.116	014.118	014.120	014.122	014.124	014.126	014.128	014.130
1201	014.206	014.208	014.210	014.212	014.214	014.216	014.218	014.220	014.222	014.224	014.226	014.228	014.230

**015**



## Pouring spoons No. 1205, semispherical

with square handle; with 1 or 2 lips, to be welded to gas pipe handles, wall thickness 5 mm (thinner walls upon request!)

**Quality I** – red marking  
highly heat resistant 1400°C for heavy metals

**Quality II** – blue marking  
heat resistant 1200°C for heavy metals

**Quality III** – without marking  
resistant 1000°C for aluminium

Outside dia. mm	60	80	100	120	140	160	180	200	220	240	260	280	300
<b>Design</b>	<b>Item No.</b>												
Qual. I	015.106	015.108	015.110	015.112	015.114	015.116	015.118	015.120	015.122	015.124	015.126	015.128	015.130
Qual. II	015.206	015.208	015.210	015.212	015.214	015.216	015.218	015.220	015.222	015.224	015.226	015.228	015.230
Qual. III	015.306	015.308	015.310	015.312	015.314	015.316	015.318	015.320	015.322	015.324	015.326	015.328	015.330

**016**

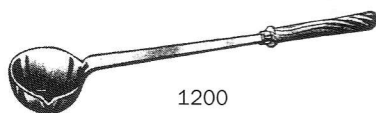


## Pouring spoons No. 1203, semispherical

with hook handle, left lip, wall thickness 5 mm, quality III = 1000°C

Outside dia. mm	60	80	100	120	140	160	180	200	220	240	260	280	300
<b>Item No.</b>	016.106	016.108	016.110	016.112	016.114	016.116	016.118	016.120	016.122	016.124	016.126	016.128	016.130

**017**



## Pouring spoons No. 1200, semispherical

with left lip and tapered handle, length 400 mm, with or without wooden handle, quality III = 1000°C

a) wall thickness 2 mm = No. 1200 A  
b) wall thickness 5 mm = No. 1200 B

Outside dia. mm	60	70	80	90	100	110	120	130	140	150	160	170	180	190	200	210	220	230	240	250	
<b>Design</b>	<b>Item No.</b>																				
1200A without handle	017.106	017.107	017.108	017.109	017.110	017.111	017.112	017.113	017.114	017.115	017.116	017.117	017.118	017.119	017.120	017.121	017.122	017.123	017.124	017.125	
with handle	017.206	017.207	017.208	017.209	017.210	017.211	017.212	017.213	017.214	017.215	017.216	017.217	017.218	017.219	017.220	017.221	017.222	017.223	017.224	017.225	
1200B without handle	017.306	017.307	017.308	017.309	017.310	017.311	017.312	017.313	017.314	017.315	017.316	017.317	017.318	017.319	017.320	017.321	017.322	017.323	017.324	017.325	
with handle	017.406	017.407	017.408	017.409	017.410	017.411	017.412	017.413	017.414	017.415	017.416	017.417	017.418	017.419	017.420	017.421	017.422	017.423	017.424	017.425	

**017A**



## Wooden handles for pouring spoons No. 1200

Item No.	Length	Diameter	For spoon dia.
017.501	16cm	23mm	60 - 90 mm
017.502	30cm	32mm	100 - 250 mm

**INSTRUCTIONS** for the use of spoons, bells and skimmers etc.:

**Coat well!**

Quality I & II: quench tools in a cold liquid several times daily to prevent decarburization and formation of cracks.

Quality III: do not overheat, do not allow to cool and reheat tools often as decarburization and embrittlement would result.

**Remark:** Coatings see Item Nos. 435 - 441

## Capacities of pouring spoons in kgs (for aluminium):

**semispherical**

Dia.	60	80	100	120	140	160	180	200	220	240	260	280	300	mm
Depth	30	40	50	60	70	80	90	100	110	120	130	140	150	mm
Cap.	0,08	0,25	0,5	1,0	1,5	2,5	3,5	4,0	6,5	8,6	11,0	14,0	17,5	kg