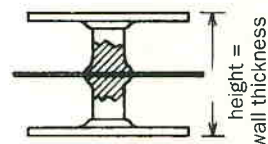


## Tin-plated KS chaplets with center plate for tight castings

KS chaplets with center plate guarantee tight castings; tight against water, steam, oil, gas, fuel etc.

KS chaplets feature **the plate** in the middle of the wall of the casting where it ensures perfect welding (highest temperature of the liquid metal), thus guarantees tightness of the casting.

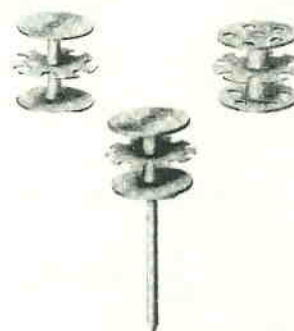
It is perfectly protected against damage, corrosion, impacts, fettling, sand-blasting and machining.



### 1) with round plates (smooth or perforated)

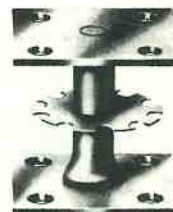
Plate dia. x thickness mm	Leg dia. mm	Center plate size mm	Height mm	Min. quantity
10 x 0,4	1,6; 2,5	11 x 0,3	5 - 20	1000
14 x 0,5	2,5	16 x 0,3	6 - 20	1000
15 x 1,0	3,0; 3,5; 4,0	16 x 0,3	8 - 25	1000
20 x 1,0	4,0; 5,0	23 x 0,5	10 - 25 (height increments=1 mm)	500
25 x 1,0	5,0; 6,0	23 x 0,5	10, 12, 15, 18, 20, 22, 25, 28, 30	500

The round chaplets with center plate are also available with **welded pin**.



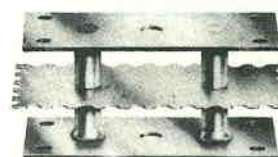
### 2) with square plates and 1 leg

Plate dia. x thickness mm	Leg dia. mm	Center plate size mm	Height mm	Min. quantity
15 x 15 x 1,0	4	16 x 0,3	10 - 20	500
20 x 20 x 1,0	5	16 x 0,5	10 - 25	500
20 x 20 x 1,0	5	23 x 0,5	10 - 25 (height increments=1 mm)	500
25 x 25 x 1,0	5	23 x 0,5	10, 12, 15, 18, 20, 22, 25, 28, 30	500



### 3) with rectangular plates and 2 legs

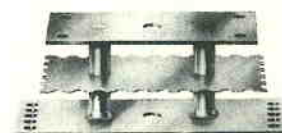
Plate dia. x thickness mm	Leg dia. mm	Center plate size mm	Height mm	Min. quantity
50 x 25 x 1,0	5	54 x 27 x 0,5	10, 12, 15, 18, 20, 22, 25, 28, 30	500
60 x 30 x 1,0	6	60 x 30 x 0,5	12, 15, 18, 20, 22, 25, 28, 30, 32, 35, 38, 40	200
60 x 30 x 1,5	8 10 12	60 x 30 x 0,5	15, 18, 20, 22, 25, 28, 30, 32, 35, 38, 40, 45, 50	200
80 x 40 x 1,5	8 10 12	80 x 40 x 0,5	15, 18, 20, 22, 25, 28, 30, 32, 35, 38, 40, 45, 50, 55, 60	100
80 x 40 x 2,0	10 12 15	80 x 40 x 0,5	15, 18, 20, 22, 25, 28, 30, 32, 35, 38, 40, 45, 50, 55, 60	100



Intermediate heights upon request.

### 4) with rectangular plates, 2 legs and an extended bottom plate with fixing holes

Top plate mm	Bottom plate mm	Leg dia. mm	Center plate size mm	Height mm	Min. quantity
50 x 25 x 1,0	66 x 25 x 1,0	5	54 x 27 x 0,5	10, 12, 15, 18, 20, 22, 25, 28, 30	500
60 x 30 x 1,0	80 x 30 x 1,0	6	60 x 30 x 0,5	12, 15, 18, 20, 22, 25, 28, 30, 32, 35, 38, 40	200
60 x 30 x 1,5	80 x 30 x 1,5	8 10 12	60 x 30 x 0,5	15, 18, 20, 22, 25, 28, 30, 32, 35, 38, 40, 45, 50	200
80 x 40 x 1,5	100 x 40 x 1,5	8 10 12	80 x 40 x 0,5	15, 18, 20, 22, 25, 28, 30, 32, 35, 38, 40, 45, 50, 55, 60	100
80 x 40 x 2,0	100 x 40 x 2,0	10 12 15	80 x 40 x 0,5	15, 18, 20, 22, 25, 28, 30, 32, 35, 38, 40, 45, 50, 55, 60	100



**Not stocked! Please observe the min. quantities!**