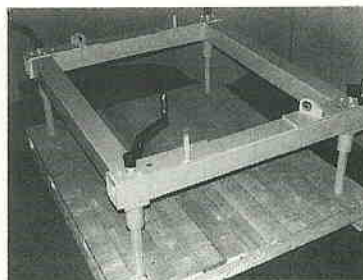


Lifting device for pattern-plates

Especially designed for the quick and care taking change of 1/1, 1/2 or 1/4 pattern-plates. Existing plates may be adapted by fitting threads. The lifting device is placed on the plate and fixed with lifting screw within the thread bushes. The frame contains a drive-screw, driving a chain and thus moving 4 chain-wheels used as nuts. This guarantees a parallel lifting and avoids damages of the plate.

On request. Please specify the size of your moulding-boxes!



194

Mould box pins of steel

for round and oblong holes, with variable diameter

Secure positioning in the top box as the pin is spring-loaded. No backlash between pin and hole. Pressure is released by actuating the handle. Pin can easily be retracted (pin is tapered).

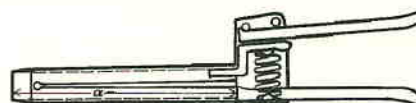
Diameter: 19 – 30 mm

Guide pin length: 100 – 500 mm

The following mould pin sizes are stocked:

Length	150 mm	200 mm	250 mm	300 mm
Diameter	Item No.			
20 mm	195.206	195.211	195.216	195.217
22 mm	195.406	195.411	195.416	195.417

Certain times of delivery must be taken into account for other sizes.



195

Mould box pins of steel

with three springs, for round holes

Easy to introduce and to remove; flexible, stable and durable connection.

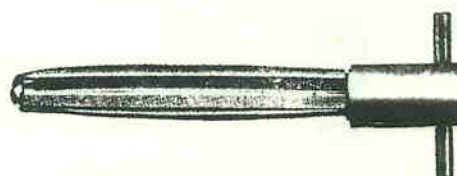
Diameter: 22 – 25 mm

Guide pin length: 100 – 350 mm

The following mould pin sizes are stocked:

Length	150 mm	200 mm	250 mm	300 mm
Diameter	Item No.			
22 mm	196.409	196.414	196.419	196.420

Certain times of delivery must be taken into account for other sizes.



196

Rigid mould box bolts of steel

hardened and ground,
for round and oblong holes.

Please specify all
dimensions required
(see drawing).

Table of dimensions available.

Not stocked, certain times of delivery should be taken into account.



197

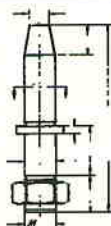
Rigid pattern plate pins of steel

hardened and ground,
for round and oblong holes
(also available with internal thread).

Please specify all
dimensions required
(see drawing).

Table of dimensions available.

Not stocked, certain times of delivery should be taken into account.



197A

Steel guide bushes for mould boxes

hardened, with round or oblong hole

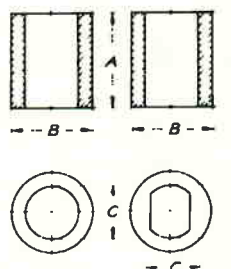
Standard dimensions in mm:

Round hole bush			Oblong hole bush		
A	B	C	Item No.	C	Item No.
40	30	18	198.001	18	198.101
40	30	19	198.002	19	198.102
40	32	20	198.003	20	198.103
40	35	21	198.004	21	198.104
40	35	22	198.005	22	198.105
40	38	25	198.006	25	198.106
40	45	30	198.007	30	198.107

Other sizes upon request!

Table of dimensions available.

Not stocked, certain times of delivery should be taken into account.



Round hole
bush

Oblong hole
bush



198