

522

ZOBO-drills with replaceable center point

Types: 1) high-alloyed chrome steel (CS), hardened
2) carbide-tipped

dia. 7 – 100 mm, 1 mm increments!

Can be resharpened down, to 1/3 of thickness!



Drill dia.	Shank dia.	Total length	Internal thread	Center point	Item No.	
					CS	HM
7 mm	8 mm	80 mm	-	-	522.007	-
8 mm					522.008	-
9 mm					522.009	-
10 mm					522.010	522.210
11 mm					522.011	522.211
12 mm					522.012	522.212
13 mm	9 mm	100 mm	M 6	522.320	522.013	522.213
14 mm					522.014	522.214
15 mm					522.015	522.215
16 mm					522.016	522.216
17 mm					522.017	522.217
18 mm					522.018	522.218
19 mm					522.019	522.219
20 mm					522.020	522.220
21 mm					522.021	522.221
22 mm					522.022	522.222
23 mm					522.023	522.223
24 mm					522.024	522.224
25 mm	522.025	522.225				
26 mm	12 mm	-	M 8	-	522.026	522.226
27 mm					522.027	522.227
28 mm					522.028	522.228
29 mm					522.029	522.229

Drill dia.	Shank dia.	Total length	Internal thread	Center point	Item No.					
					CS	HM				
30 mm	12 mm	100 mm	M 8	522.320	522.030	522.230				
31 mm					522.031	522.231				
32 mm					522.032	522.232				
33 mm					522.033	522.233				
34 mm					522.034	522.234				
35 mm					522.035	522.235				
36 mm					522.036	522.236				
37 mm					522.037	522.237				
38 mm					522.038	522.238				
39 mm					522.039	522.239				
40 mm					522.040	522.240				
41 mm					522.041	522.241				
42 mm					522.042	522.242				
44 mm					522.044	522.244				
45 mm					522.045	522.245				
48 mm					522.048	522.248				
50 mm					522.050	522.250				
51 mm					522.051	522.251				
52 mm	522.052	522.252								
55 mm	16 mm	105 mm	-	522.322	522.055	522.255				
60 mm					522.060	522.260				
63 mm					522.063	522.263				
65 mm					522.065	522.265				
70 mm					16 mm	105 mm	-	522.325	522.070	522.270
75 mm									522.075	522.275
80 mm									522.080	522.280
85 mm									522.085	522.285
90 mm									522.090	522.290
95 mm									522.095	522.295
100 mm					522.100	522.300				

Hollow shank (up to 65 mm) with internal thread for fitting extensions or reducers.

Important: never chuck ZOBO-drills with the hollow shaft, a reducer should always be used to avoid the risk of breaking the drill.

Diameter 66 mm and larger: holder can be screwed off and fitted with other shanks and extensions (M 12-thread).

These drills are available in 1-mm increments!

522A

ZOBO-accessories

1) Reducers, recommended for chucking the drill), length 60 mm

Item No.	Reduction	Thread
522.300	9/ 8 mm	M 6
522.301	12/10 mm	M 8

2) Extensions, several extension rods can be screwed together

Item No.	Dia. x length	Thread
522.302	9 x 150 mm	M 6
522.303	12 x 150 mm	M 8
522.304	9 x 400 mm	M 6
522.305	12 x 400 mm	M 8
522.366	20 x 300 mm	M 12
for drill dia. from 66 mm		

3) Center points

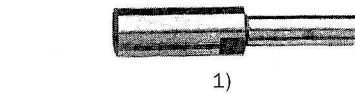
Item No.	Dia. x length mm	For drill dia.
522.320	2/2,5 x 24,5	7 - 50 mm
522.321	2/2,5 x 30	7 - 50 mm
522.322	3/3,5 x 28	51 - 65 mm
522.325	4/4,5 x 28	66 - 75 mm
522.326	5/5,5 x 30	76 - 85 mm
522.327	6/6,5 x 32	86 - 100 mm
522.319	Set of 2 points 522.320 & 522.321	

4) Depth setters, key

Item No.	Hole dia.	For drill dia.
522.306	9 mm	15 - 25 mm
522.307	12 mm	26 - 40 mm
522.308	12 mm	35 - 46 mm
522.316	16 mm	47 - 65 mm
522.317	20 mm	60 - 80 mm
522.318	20 mm	75 - 100 mm

5) Tool for undoing reducers/extensions Item No. 522.332

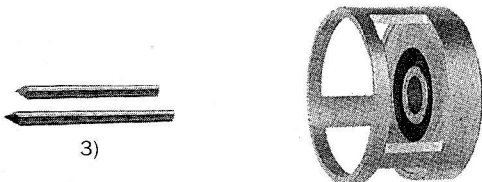
consisting of:
device for undoing reducer or extensions by means of a fork key and expeller for expelling exchangeable center points.



1)

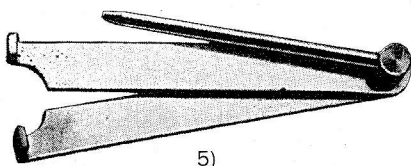


2)



3)

4)



5)