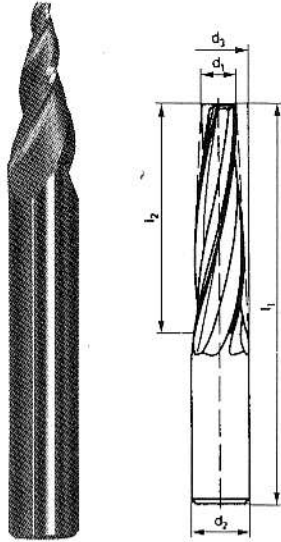


739



Tapered shank cutters of solid hard metal

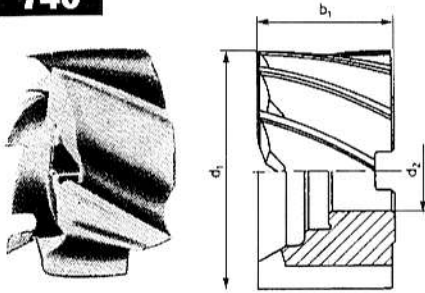
for highest precision
 35° spiral-fluted cutter, with center-cutting, cutting edge tolerance $d_1 = h11$
 shank tolerance $d_2 = h6$, angle specifies the angle to the center line

Angle	d_1 mm	l_2 mm	d_2 mm	l_1 mm	No. of cuttg. edges	Item No.
1/2 degree	6	60	8	105	3	739.301
	8	60	10	110	4	739.302
1 degree	12	50	14	105	4	739.303
	6	57	8	100	3	739.311
	8	57	10	110	4	739.312
1 1/2 degree	12	50	14	105	4	739.313
	5	57	8	100	3	739.316
	6	60	10	110	3	739.317
2 degree	12	35	14	90	4	739.318
	5	30	8	75	3	739.321
	6	57	10	110	3	739.322
2 1/2 degree	8	57	12	110	4	739.323
	5	30	8	75	3	739.326
	6	30	10	80	3	739.327
3 degree	10	40	14	90	4	739.328
	3	40	8	85	3	739.331
	5	40	10	90	3	739.332
4 degree	5	60	12	115	3	739.333
	3,5	32	8	75	3	739.341
	4	30	10	80	3	739.342
	5	45	12	100	3	739.343

Angle	d_1 mm	l_2 mm	d_2 mm	l_1 mm	No. of cuttg. edges	Item No.
5 degree	3	28	8	70	3	739.351
	3	40	10	90	3	739.352
7 degree	3,5	48	12	110	3	739.353
	2,5	22	8	65	3	739.371
8 degree	5	28	12	80	3	739.372
	8	35	18	90	4	739.381
10 degree	2,5	20	10	75	3	739.401
	3	30	14	90	3	739.402
11 degree	5	30	16	90	3	739.403
	2	20	10	75	3	739.411
15 degree	2,5	24	12	75	3	739.412
	4,5	24	14	80	3	739.413
	2,5	20	14	80	3	739.451
20 degree	4	15	12	65	3	739.452
	6,5	25	20	95	3	739.453
30 degree	2,5	10	10	75	3	739.501
	4,5	15	16	90	4	739.502
45 degree	2,5	10	12	75	3	739.601
	4,5	16	16	90	4	739.602

All cutters also available with Weldon-clamping surface and radii.
 Extra price upon request!
 Other sizes upon request!

740

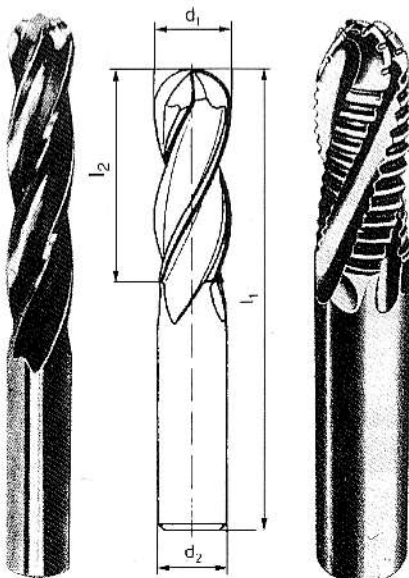


Face milling cutters for NC-machines Material: HSS-EMo5Co5
 for metal, plywood and plastics

with grooves in acc. to DIN 138, direction of cut and twist: c.w. 30°

d_1 mm	b_1 mm	d_2 mm	No. 8100 Type N		No. 8120 Type H		No. 8130 Type W	
			No. of cuttg. edges	Type No.	No. of cuttg. edges	Type No.	No. of cuttg. edges	Item No.
40	32	16	10	740.101	12	740.201	6	740.301
50	36	22	10	740.102	14	740.202	6	740.302
63	40	27	10	740.103	14	740.203	6	740.303
80	45	27	12	740.104	16	740.204	6	740.304
100	50	32	14	740.105	20	740.205	8	740.305
125	56	40	16	740.106	22	740.206	8	740.306
160	63	50	18	740.107	24	740.207	10	740.307

741



Die sinking cutters for duplicating milling machines, with round face
 with straight shank, DIN 1889/1, Material: HSS-EW9Co10

direction of cut: c.w.; direction of twist: c.w.

d_1 mm	l_2 mm	d_2 mm	l_1 mm	No. of cutting edges	Normal toothing	
					Item No.	Item No.
6	13	6	57	4	741.001	741.101
6	24	6	68	4	741.002	741.102
8	19	10	69	4	741.003	741.103
8	38	10	88	4	741.004	741.104
10	22	10	72	4	741.005	741.105
10	45	10	95	4	741.006	741.106
12	26	12	83	4	741.007	741.107
12	53	12	110	4	741.008	741.108
14	26	12	83	4	741.009	741.109
14	53	12	110	4	741.010	741.110
16	32	16	92	4	741.011	741.111
16	63	16	123	4	741.012	741.112
18	32	16	92	4	741.013	741.113
18	63	16	123	4	741.014	741.114
20	38	20	104	4	741.015	741.115
20	75	20	141	4	741.016	741.116
25	45	25	121	6	741.017	741.117
25	90	25	166	6	741.018	741.118
32	53	32	133	6	741.019	741.119
32	106	32	186	6	741.020	741.120
40	63	32	155	6	741.023	741.123
40	125	32	217	6	741.024	741.124